

GENERAL NOTES:

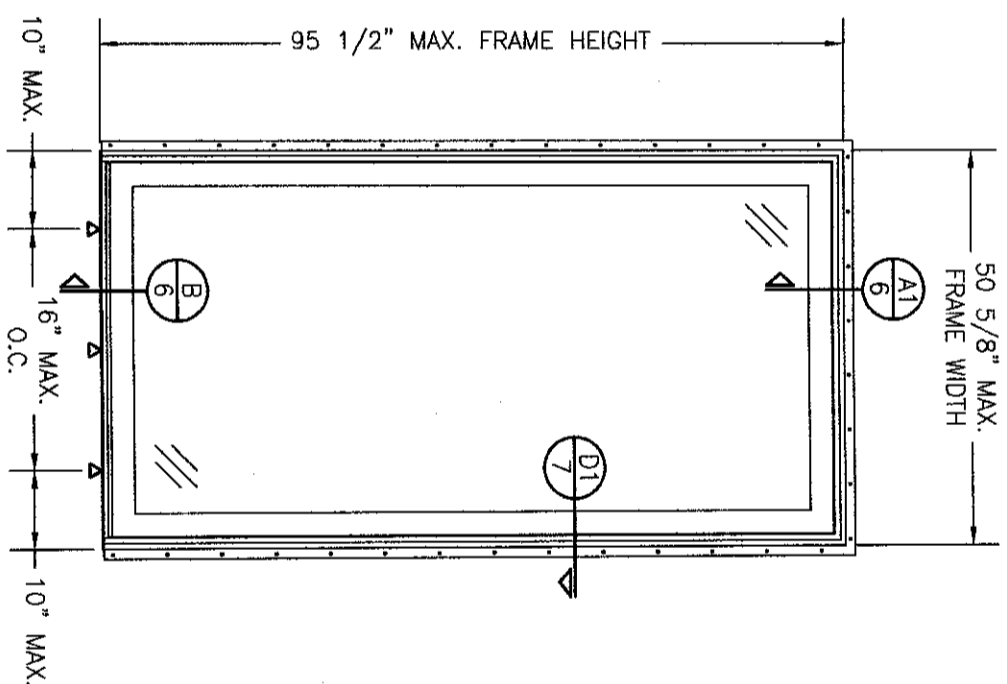
1. ALL FASTENERS SHALL BE IN ACCORDANCE WITH THESE DRAWINGS. SPECIFIED ANCHOR EMBED TO BASE MATERIAL SHALL BE BEYOND WALL FINISH OR STUCCO.
2. OPENINGS, BUCKING & BUCKING FASTENERS MUST BE PROPERLY DESIGNED & INSTALLED TO TRANSFER WIND LOADS TO THE STRUCTURE.
3. THESE NON-IMPACT RATED PRODUCT INSTALLATIONS & MULLION CONDITIONS ARE IN ACCORDANCE WITH AND MEET THE REQUIREMENTS OF THE FLORIDA BUILDING CODE (FBC).
4. ALL ANCHORS SECURING PRODUCT FRAMES TO PRESSURE TREATED BUCKS OR WOOD FRAMING SHALL BE CAPABLE OF RESISTING CORROSION CAUSED BY THE PRESSURE TREATING CHEMICALS IN THE WOOD.
5. MATERIALS, INCLUDING BUT NOT LIMITED TO STEEL SCREWS, THAT COME INTO CONTACT WITH OTHER DISSIMILAR MATERIALS SHALL MEET THE REQUIREMENTS OF FLORIDA BUILDING CODE CHAPTER 20.
6. TO THE BEST OF OUR KNOWLEDGE, THE PRODUCT SHOWN HEREIN IS CERTIFIED & QUALITY ASSURED BY A FLORIDA STATE APPROVED CERTIFICATION/OA ENTITY & SHALL BE LABELED IN ACCORDANCE WITH THE FBC AND THE FLORIDA DEPARTMENT OF BUSINESS & PROFESSIONAL REGULATION SPECIFICATIONS. PRODUCT ASSEMBLY IS NOT PART OF THIS DRAWING AND SHALL BE IN ACCORDANCE WITH THE MANUFACTURER'S QUALITY ASSURANCE SPECIFICATIONS & TESTING REPORTS.
7. CERTIFICATION OF THESE PRODUCT INSTALLATIONS & MULLION CONDITIONS SHALL BE CONSIDERED VOID IF ANY OF THE FOLLOWING APPLY: 1) PRODUCT IS INSTALLED WITHOUT A BUILDING PERMIT FROM THE APPLICABLE LOCAL BUILDING DEPARTMENT. 2) PRODUCT IS INSTALLED BY ANYONE OTHER THAN A LICENSED CONTRACTOR EXPERIENCED WITH INSTALLATIONS OF THIS TYPE OF PRODUCT. 3) IF CHANGES HAVE OCCURRED TO THE PRODUCT'S CERTIFICATION ENTITY'S CERTIFICATE THAT CAUSE THESE INSTALLATIONS TO BE INCORRECT OR INCONSISTENT WITH WHAT HAS BEEN TESTED.
8. THE LEAST DESIGN PRESSURE SPECIFIED EITHER IN THIS DRAWING OR IN THE PRODUCT'S CERTIFICATION SHALL CONTROL FOR THE INSTALLED PRODUCT.
9. THESE DRAWINGS CERTIFY THE PRODUCT INSTALLATION & MULLION CONDITIONS ONLY. WATER PROOFING OF THE INSTALLED PRODUCT IS NOT PART OF THIS INSTALLATION/MULLION CERTIFICATION. THAT RESPONSIBILITY SHALL BE THAT OF THE MANUFACTURER &/OR INSTALLER.

INSTALLATION & MULLION EVALUATION IS BASED ON APPLICABLE STANDARDS AND/OR INFORMATION & RESULTS FROM APPLICABLE TEST REPORTS. THE FLORIDA BUILDING CODE VERSION CONSIDERED WITH THE EVALUATION WAS THAT IN FORCE AT THE TIME OF THE EVALUATION. IN THE EVENT OF CODE VERSION CHANGES/UPDATES OR IN THE EVENT THAT NEW OR ADDITIONAL TESTING IS COMPLETED ON THE REFERENCED PRODUCT, PRIOR TO STATING CODE COMPLIANCE WITH THE STATE, THE MANUFACTURER SHALL CONFIRM WITH THE INSTALLATION EVALUATION ENGINEER OF RECORD THAT THE INSTALLATIONS & MULLION CONDITIONS SPECIFIED HERE-IN ARE CURRENT WITH THE THEN CURRENT TESTING, CODE AND APPLICABLE STANDARDS.

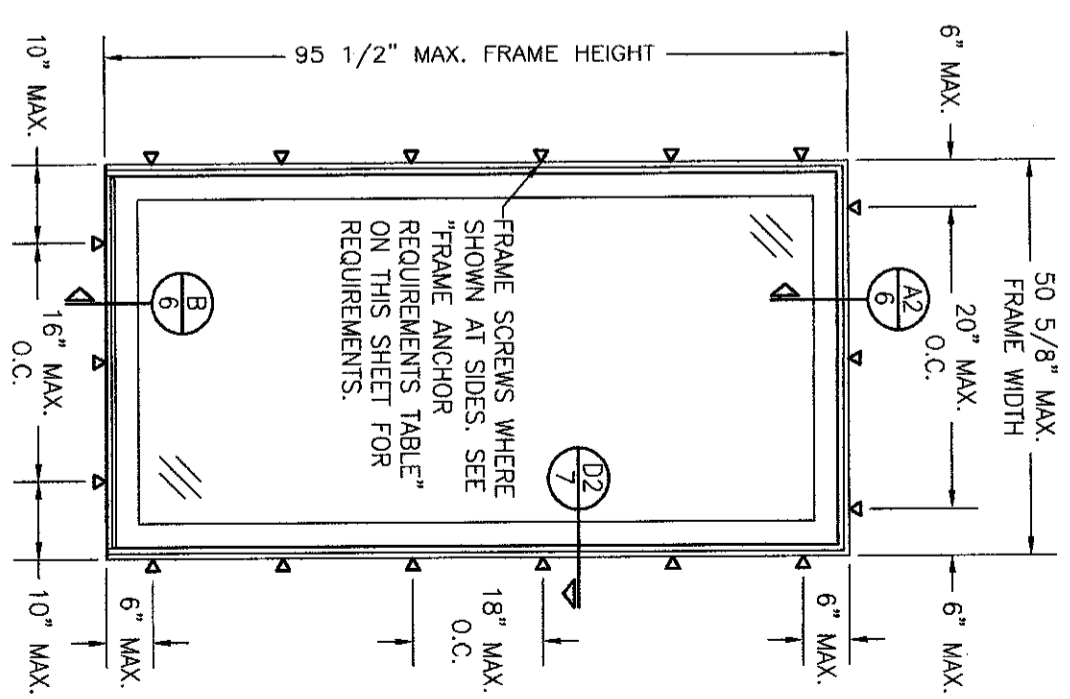
FRAME ANCHOR REQUIREMENTS TABLE

OPENING TYPE (SUBSTRATE)	FRAME/SILL/RETAINER/NAIL FIN TO OPENING FASTENER TYPE	MINIMUM EMBED	MINIMUM EDGE DIST.
(1) FRAME, SILL & SILL FIXED PANEL BRACKET SCREWS			
(4) MIN. 2X WOOD FRAME OR BUCK (MIN. GR. 3 & G=0.55)	NO. 10 WOOD SCREW	1 1/4"	3/4"
MIN. 18 GA. 33 KSI METAL STUD	NO. 10 GR. 5 SELF TAP/DRILL SCREW	FULL	1/2"
MIN. 1/8" THK A36 STEEL	NO. 10 GR. 5 SELF TAP/DRILL SCREW	FULL	1/2"
MIN. 1/8" THK 6063-T5 ALUM.	NO. 10 GR. 5 SELF TAP/DRILL SCREW	FULL	1/2"
MIN. C-90 CMU	(2) 1/4" CONCRETE SCREW	1 1/4"	2"
MIN. 2500 PSI CONCRETE	(2) 1/4" CONCRETE SCREW	1 1/2"	2"
PANEL RETAINER SCREWS			
(4) MIN. 2X WOOD FRAME OR BUCK (MIN. GR. 3 & G=0.55)	NO. 8 SMS OR WOOD SCREW	1 1/4"	3/4"
MIN. 18 GA. 33 KSI METAL STUD	NO. 8 GR. 5 SELF TAP/DRILL SCREW	FULL	1/2"
MIN. 1/8" THK A36 STEEL	NO. 8 GR. 5 SELF TAP/DRILL SCREW	FULL	1/2"
MIN. 1/8" THK 6063-T5 ALUM.	NO. 8 GR. 5 SELF TAP/DRILL SCREW	FULL	1/2"
2500 PSI CONCRETE	(2) 3/16" CONCRETE SCREW	1 1/2"	2"
(3) NAILING FIN FASTENERS			
MIN. 2X4 WOOD FRAME OR BUCK (MIN. GR. 3 & G=0.55)	NO. 8 X 1 1/2" SMS	1 3/8"	1/2"
MIN. 2X4 WOOD FRAME OR BUCK (MIN. GR. 3 & G=0.55)	11 GA. ROOFING NAIL	1 5/8"	1/2"
MIN. 1/8" THK A36 STEEL	NO. 8 GR. 5 SELF TAP/DRILL SCREW	FULL	1/2"
MIN. 1/8" THK 6063-T5 ALUM.	NO. 8 GR. 5 SELF TAP/DRILL SCREW	FULL	1/2"

CMU IS NOT APPLICABLE AT HEAD & SILL.
 EXTERIOR ELEVATION:
 FIXED "0" PANEL DOOR
 SCALE: 1/2" = 1'-0"
 (NAIL FIN MOUNT CONDITION)



EXTERIOR ELEVATION:
 FIXED "0" PANEL DOOR
 SCALE: 1/2" = 1'-0"
 (FRAME SCREW MOUNT CONDITION)

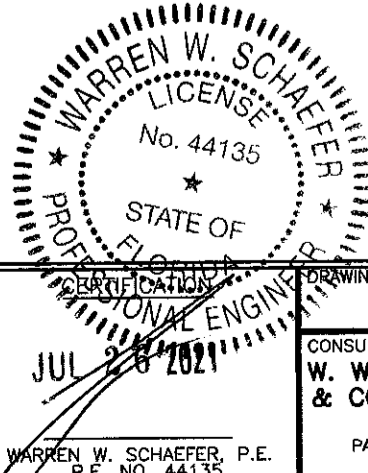


PRESSURES & CONDITIONS SHOWN IN THIS DRAWING ARE GOVERNED BY INSTALLATION & MULLION REQUIREMENTS ONLY. THE GOVERNING CONDITIONS ON ANY SPECIFIC PRODUCT SHALL BE THE LESSER OF THOSE SPECIFIED IN THE PRODUCT'S STATE APPROVAL OR THAT SHOWN IN THESE DRAWINGS.


INSTALLATION NOTE:
 WHEN NECESSARY, INSTALLATION METHODS MAY BE MIXED WITH ANY ONE DOOR SUCH THAT INDIVIDUAL SIDES OF THE DOOR MAY USE ONE OR THE OTHER ANCHOR METHOD (EXAMPLE: ONE SIDE MAY USE FRAME SCREWS METHOD WHILE THE OTHER SIDE & HEAD USE FIN)

ANCHOR/SUBSTRATE EVALUATION NOTE:
 ALL ANCHORS IN THEIR SPECIFIED SUBSTRATES HAVE BEEN ANALYZED IN ACCORDANCE WITH THEIR APPLICABLE STANDARD(S) AND ARE FOUND TO BE CAPABLE OF SUPPORTING ALL LOADS IMPOSED ON THEM UNDER THE GUIDELINES OF THIS DOCUMENT. ANY SUBSTRATES OR CONDITIONS OUTSIDE OF WHAT IS SHOWN HERE-IN SHALL BE SUBJECT TO JOB SPECIFIC ENGINEER'S REVIEW & CERTIFICATION.

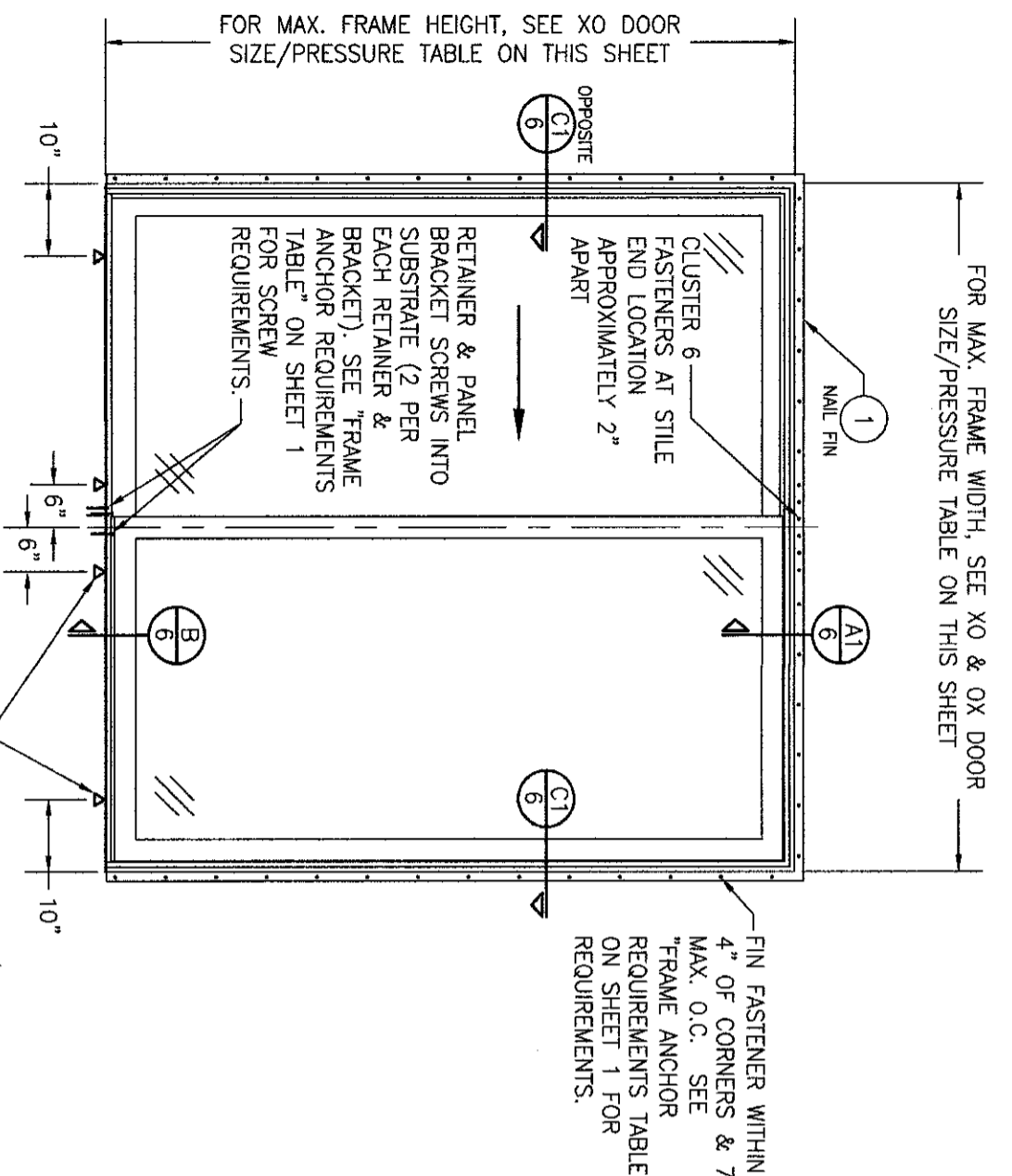
ALLOWABLE DESIGN PRESSURE
 (FIXED "0" PANEL UNITS)
 +/- 50 PSF



THESE DRAWINGS ARE APPLICABLE ONLY TO THE PRODUCT SPECIFIED. THEY MAY NOT BE USED FOR THE ASSEMBLY AND/OR INSTALLATION OF ANY OTHER PRODUCT NOR MAY THEY BE USED FOR RATIONAL AND/OR LOCAL APPROVAL OF ANY PRODUCT NOT PRODUCED BY THE MANUFACTURER STATED ON THESE DRAWINGS.

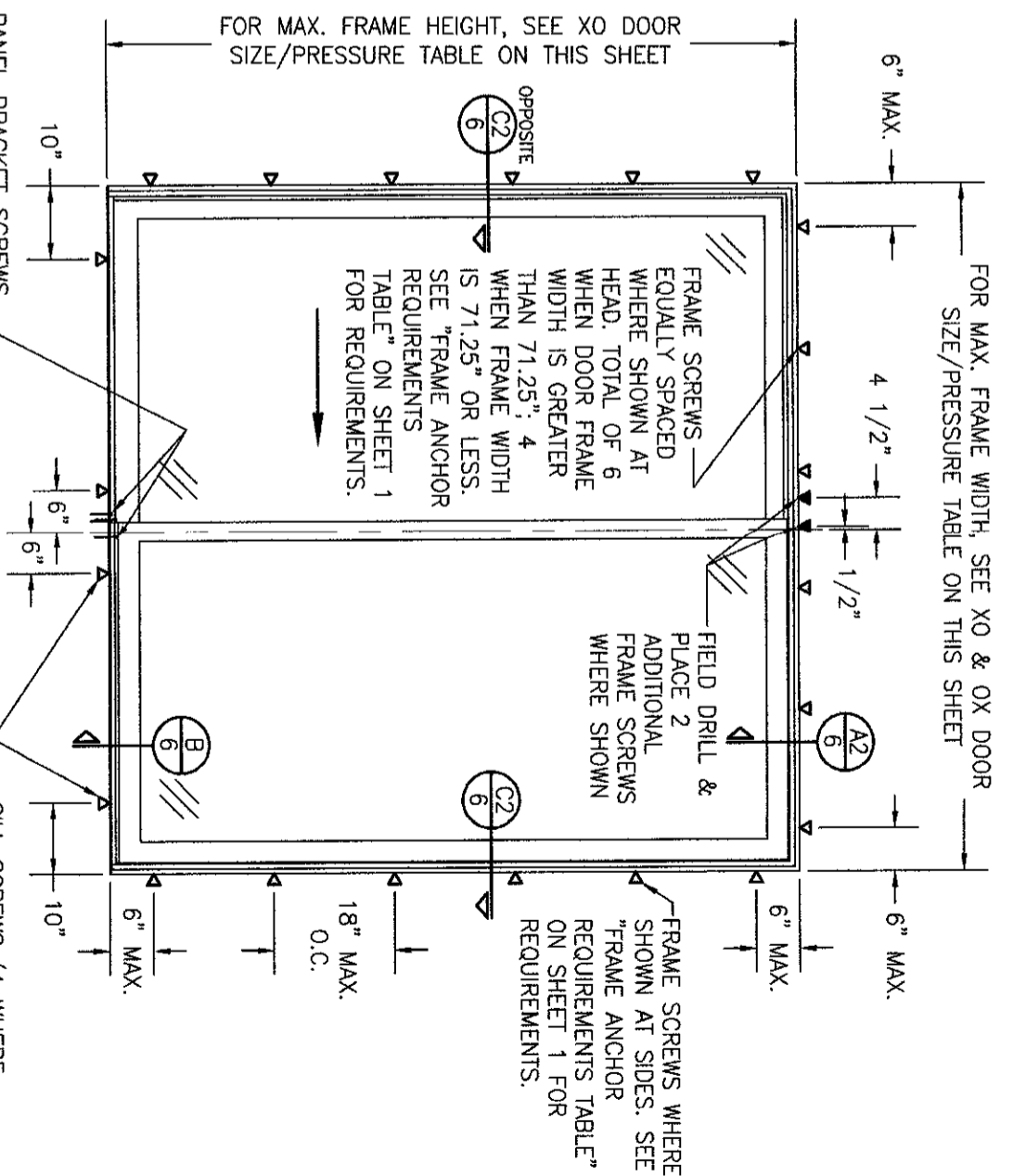
DRAWING NO. 2003	SHEET NO. 1 OF 7	DRAWING TITLE IMPERVIA MODEL 2.0 NON-IMPACT SLIDING PATIO DOORS	CONSULTANTS W. W. SCHAEFER ENGINEERING & CONSULTING, P.A. (CA 6809) 7480 150TH COURT NORTH PALM BEACH GARDENS, FL 33418 PHONE: 561-744-3424	JOB INFORMATION:  PELLA CORPORATION 102 MAIN STREET PELLA, IA 50219 641-621-1000	NO.	REVISION DESCRIPTION	BY	DATE

DRAWN BY: W.W.S. CHECKED BY: W.W.S.
 DATE: 07/08/21



**EXTERIOR ELEVATION:
XO OR OX DOOR**
SCALE: 1/2" = 1'-0"
(NAIL FIN MOUNT CONDITION)

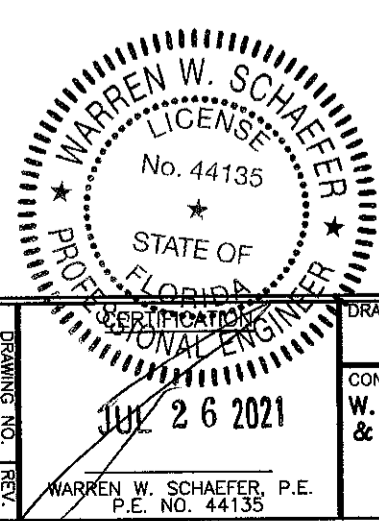
SILL SCREWS (4 WHERE SHOWN). SEE "FRAME ANCHOR REQUIREMENTS TABLE" ON SHEET 1 FOR REQUIREMENTS.



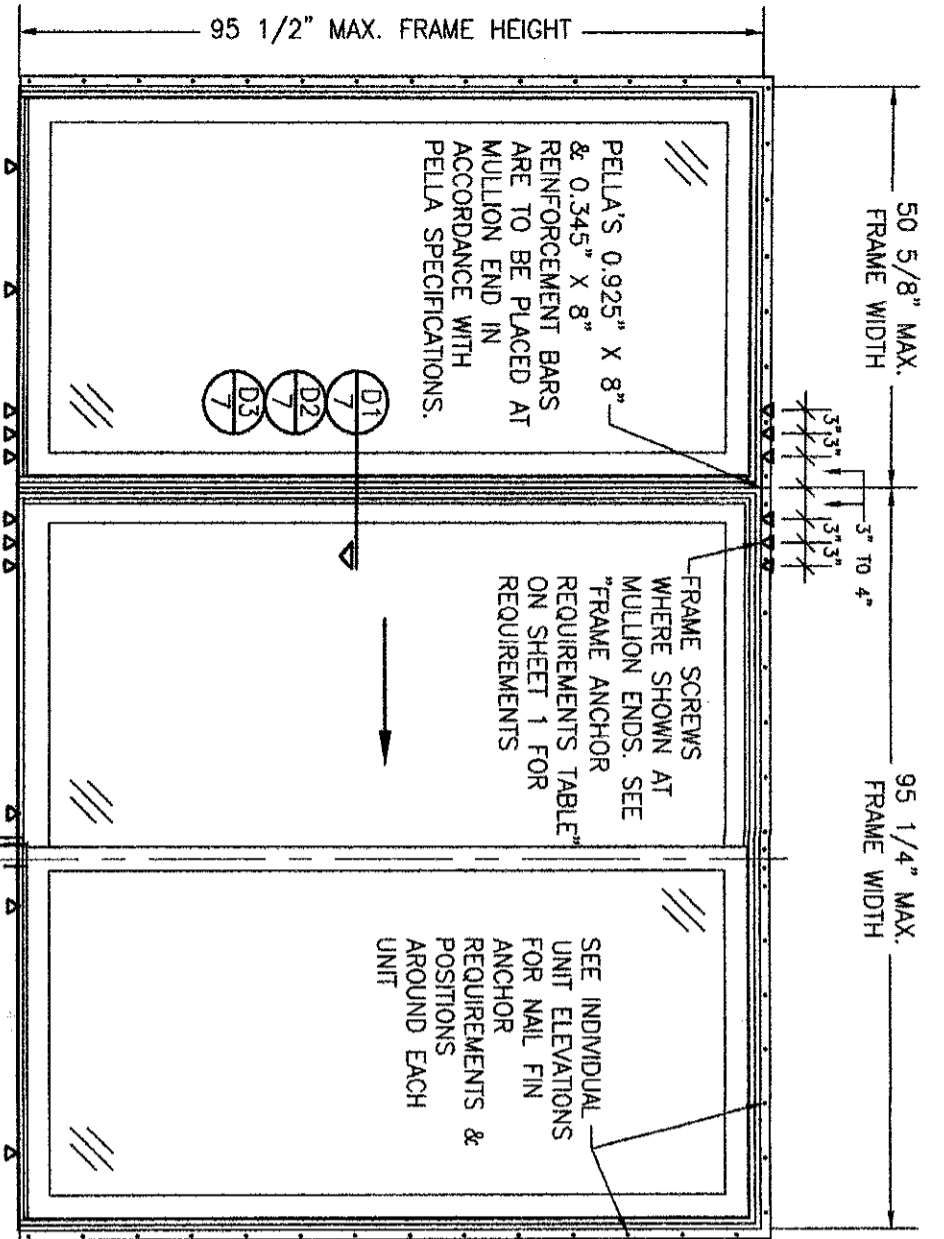
**EXTERIOR ELEVATION:
XO OR OX DOOR**
SCALE: 1/2" = 1'-0"
(FRAME SCREW MOUNT CONDITION)

SILL SCREWS (4 WHERE SHOWN). SEE "FRAME ANCHOR REQUIREMENTS TABLE" ON SHEET 1 FOR REQUIREMENTS.

ALLOWABLE DESIGN PRESSURE (XO & OX DOORS)		
MAX. FRAME WIDTH (IN.)	MAX. FRAME HEIGHT (IN.)	ALLOWABLE PRESSURE (+/- PSF)
71.25	81.5	50
95.25	95.5	35
NAIL FIN MOUNT		
95.25	95.5	50
FRAME SCREW MOUNT		
95.25	95.5	50

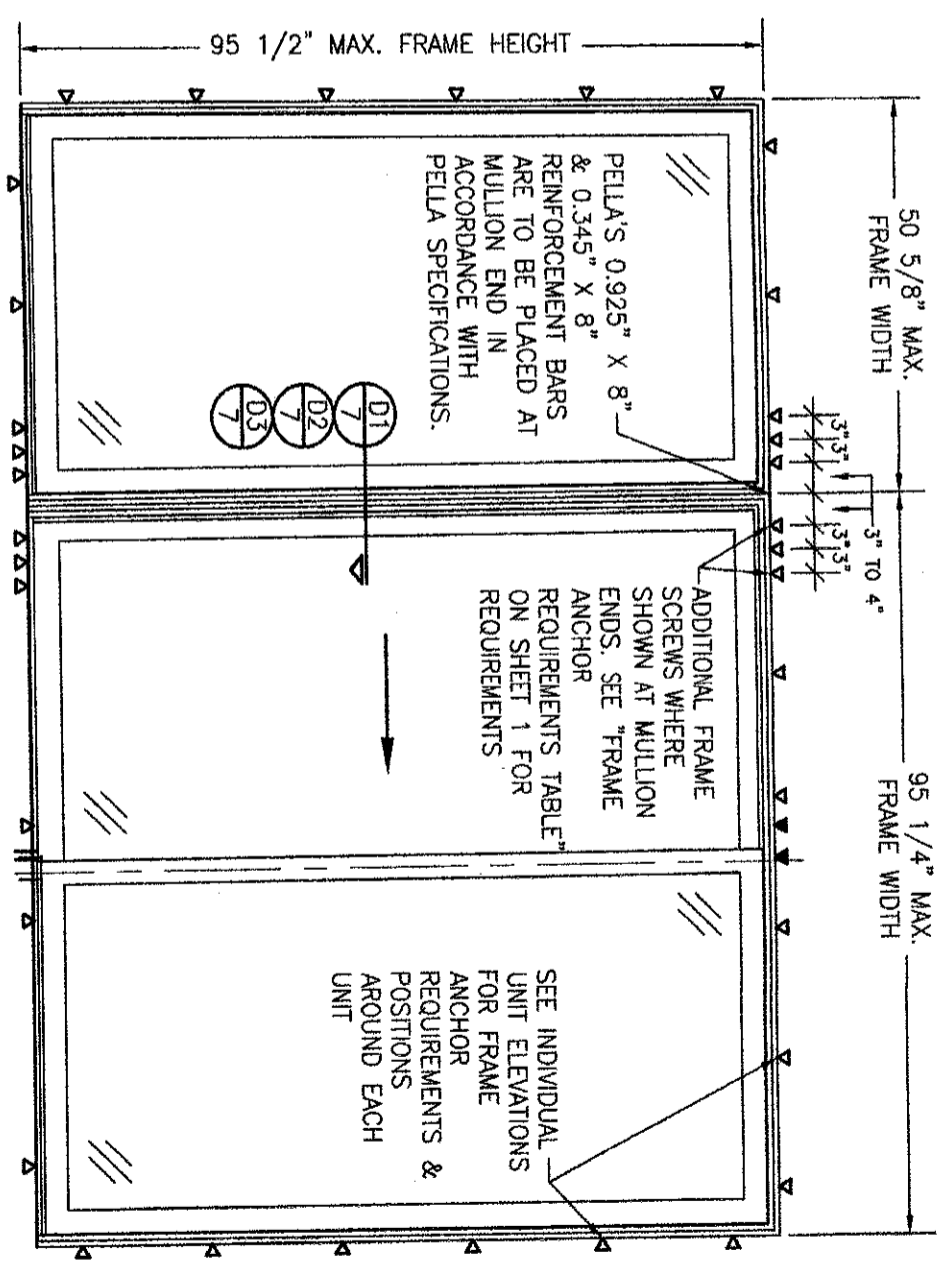


DRAWING TITLE IMPERVIA MODEL 2.0 NON-IMPACT SLIDING PATIO DOORS		JOB INFORMATION: PELLA CORPORATION 102 MAIN STREET PELLA, IA 50219 641-621-1000													
CONSULTANTS W. W. SCHAEFER ENGINEERING & CONSULTING, P.A. (CA 6809) 7480 150TH COURT NORTH PALM BEACH GARDENS, FL 33418 PHONE: 561-744-3424		<table border="1"> <thead> <tr> <th>NO.</th> <th>REVISION DESCRIPTION</th> <th>BY</th> <th>DATE</th> </tr> </thead> <tbody> <tr> <td> </td> <td> </td> <td> </td> <td> </td> </tr> <tr> <td> </td> <td> </td> <td> </td> <td> </td> </tr> </tbody> </table>		NO.	REVISION DESCRIPTION	BY	DATE								
NO.	REVISION DESCRIPTION	BY	DATE												
DRAWING NO. 2003		DRAWN BY: W.M.S. / CHECKED BY: W.M.S.													
SHEET NO. 2 OF 7		DATE: 07/08/21													



**EXTERIOR ELEVATION:
O-XO MULLED UNIT**
SCALE: 1/2" = 1'-0"
(NAIL FIN MOUNT CONDITION)

(O-XO UNIT IS SHOWN. SEE CONFIGURATION TABLE ON THIS SHEET FOR ALL OTHER APPLICABLE MULLED UNITS CONFIGURATIONS.)



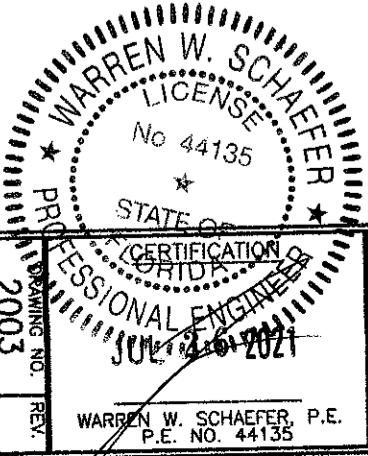
**EXTERIOR ELEVATION:
O-XO MULLED UNIT**
SCALE: 1/2" = 1'-0"
(FRAME SCREW MOUNT CONDITION)


(O-XO UNIT IS SHOWN. SEE CONFIGURATION TABLE ON THIS SHEET FOR ALL OTHER APPLICABLE MULLED UNITS CONFIGURATIONS.)

ALLOWABLE DESIGN PRESSURE (SIDE-BY-SIDE MULLED UNITS)	ALLOWABLE PRESSURE FOR THE MULLED UNIT IS AS CONTROLLED BY THE LESSER ALLOWABLE PRESSURE ON EACH THE O, OX & XO DOOR UNIT(S) WITHIN THE MULLED UNIT. SEE THE O, OX & XO DOOR UNIT PRESSURE TABLES ON SHEETS 1 & 2 FOR ALLOWABLE PRESSURE ON EACH UNIT.
NOTE:	PRESSURES STATED ABOVE ARE APPLICABLE TO ALL 3 MULLION SECTIONS D1, D2 & D3.

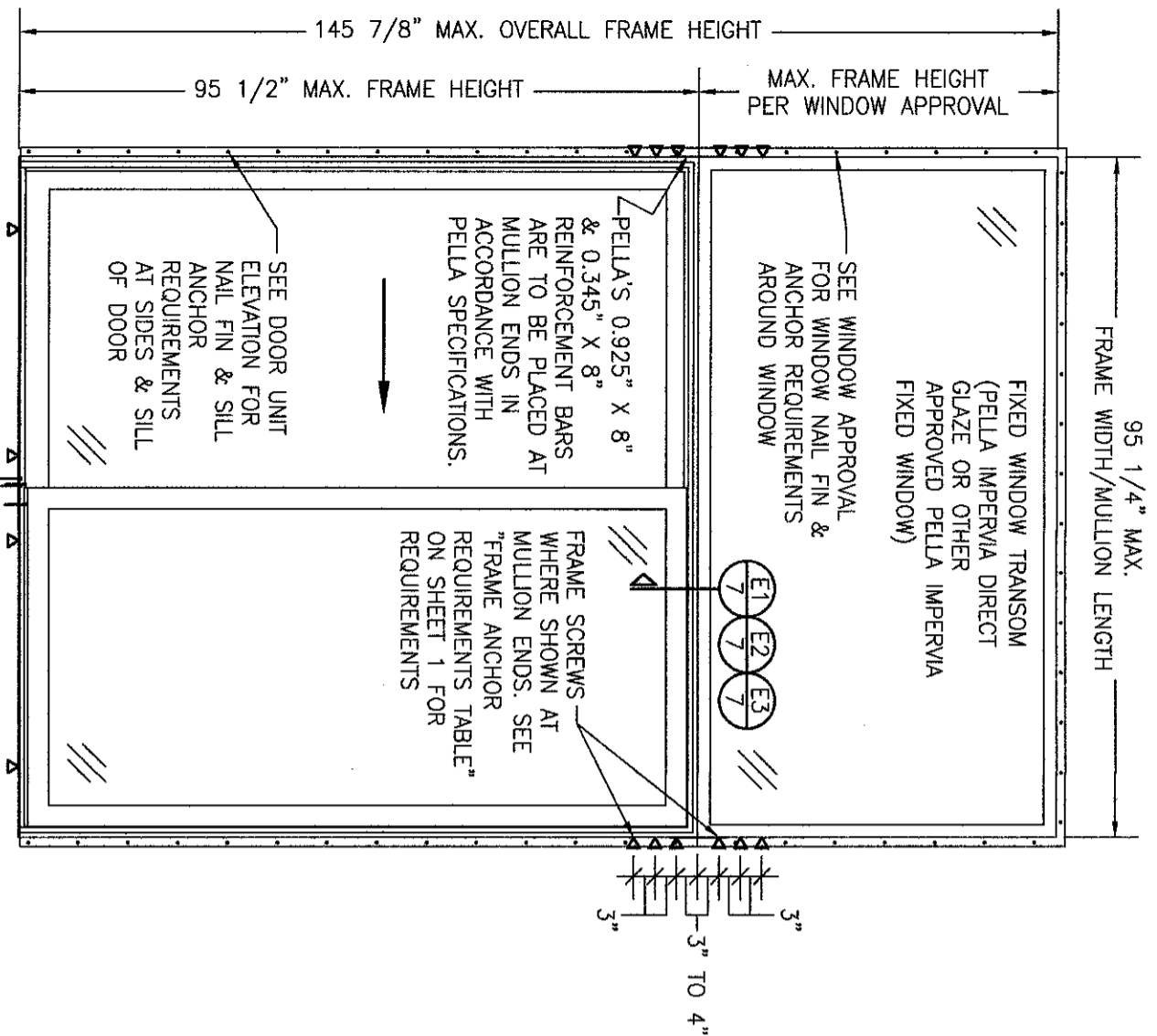
SIDE-BY-SIDE MULLED UNIT CONFIGURATION TABLE	
NUMBER OF PANELS	CONFIGURATIONS
1	0
2	0-0 0-XO, 0-0X, XO-0, OX-0 & 0-0-0
3	0-XO-0, 0-0X-0, XO-0X, OX-XO, XO-XO, OX-0X, 0-0-XO, 0-0-0X, XO-0-0, OX-0-0 & 0-0-0-0
4	0-XO-0, 0-0X-0, XO-0X, OX-XO, XO-XO, OX-0X, 0-0-XO, 0-0-0X, XO-0-0, OX-0-0 & 0-0-0-0

"O" APPLIES TO A FIXED PANEL;
"X" APPLIES TO A SLIDING PANEL
"_" DESIGNATES A MULLION



DRAWING TITLE IMPVERIA MODEL 2.0 NON-IMPACT SLIDING PATIO DOORS	
CONSULTANTS W. W. SCHAEFER ENGINEERING & CONSULTING, P.A. (CA 6809) 7480 150TH COURT NORTH PALM BEACH GARDENS, FL 33418 PHONE: 561-744-3424	JOB INFORMATION:  PELLA CORPORATION 102 MAIN STREET PELLA, IA 50219 641-621-1000

NO.	REVISION DESCRIPTION	BY	DATE



**EXTERIOR ELEVATION:
XO DOOR WITH TRANSOM**
SCALE: 1/2" = 1'-0"
(NAIL FIN MOUNT CONDITION)
(XO DOOR IS SHOWN. OX DOOR ALSO APPLIES.)

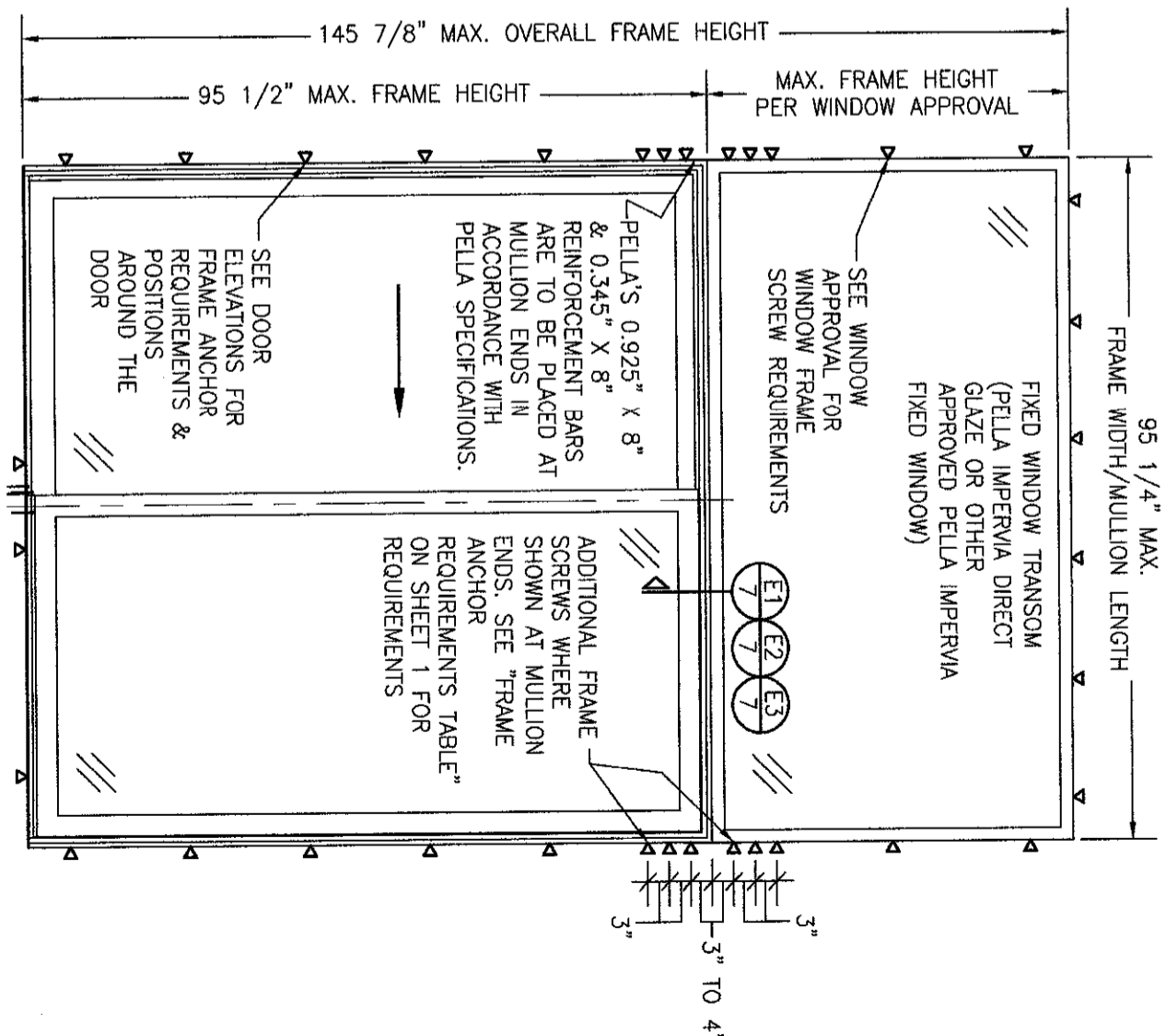
**ALLOWABLE DESIGN PRESSURE
(XO & OX DOORS WITH TRANSOM)**

FOR ALLOWABLE PRESSURE ON DOOR, SEE XO & OX DOOR ELEVATION SHEET 2.
FOR ALLOWABLE PRESSURE ON TRANSOM WINDOW, SEE APPLICABLE WINDOW APPROVAL.
FOR ALLOWABLE PRESSURE ON MULLION, SEE MULLION PRESSURE TABLE ON THIS SHEET.

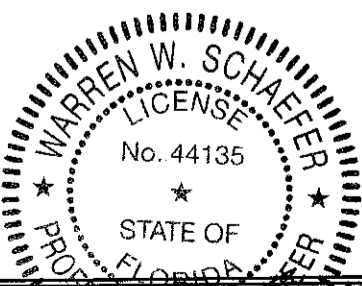
NOTE: ALLOWABLE PRESSURE ON THE ENTIRE UNIT SHALL BE THE LESSER OF THE ALLOWABLE PRESSURES REFERENCED ABOVE.

ALLOWABLE TRANSOM MULLION PRESSURE TABLE (JAMB TO JAMB MULLION)		
MAXIMUM FRAME WIDTH (IN.)	MAXIMUM OVERALL FRAME HEIGHT (IN.)	ALLOWABLE PRESSURE (+/- PSF)
95.25	146	28.3
	132	31.3
	120	34.4
92.25	108	38.2
	96	43.0
	92	44.9
89.25	146	30.2
	132	33.4
	120	36.7
	108	40.8
	96	45.9
	92	47.9
86.25	146	32.2
	132	35.7
	120	39.2
	108	43.6
	96	49.0
	94	50.0
83.25	146	34.5
	132	38.2
	120	42.0
	108	46.7
	100	50.0
	146	37.0
80.25	146	39.9
	132	44.1
	120	48.5
	116	50.0
	146	43.0
	132	47.6
77.25	124	50.0
	146	46.6
	136	50.0
71.25	146	50.0

ALLOWABLE TRANSOM MULLION PRESSURE TABLE (1/2" & 1" SPREAD MULLIONS)		
MAXIMUM FRAME WIDTH (IN.)	MAXIMUM OVERALL FRAME HEIGHT (IN.)	ALLOWABLE PRESSURE (+/- PSF)
95.25	146	50.0



**EXTERIOR ELEVATION:
XO DOOR WITH TRANSOM**
SCALE: 1/2" = 1'-0"
(FRAME SCREW MOUNT CONDITION)
(XO DOOR IS SHOWN. OX DOOR ALSO APPLIES.)



JUL 26 2021

WARREN W. SCHAEFER, P.E.
P.E. NO. 44135

DRAWING TITLE
IMPERVIA MODEL 2.0 NON-IMPACT SLIDING PATIO DOORS

CONSULTANTS
W. W. SCHAEFER ENGINEERING & CONSULTING, P.A. (CA 6809)
7480 150TH COURT NORTH
PALM BEACH GARDENS, FL 33418
PHONE: 561-744-3424

JOB INFORMATION:

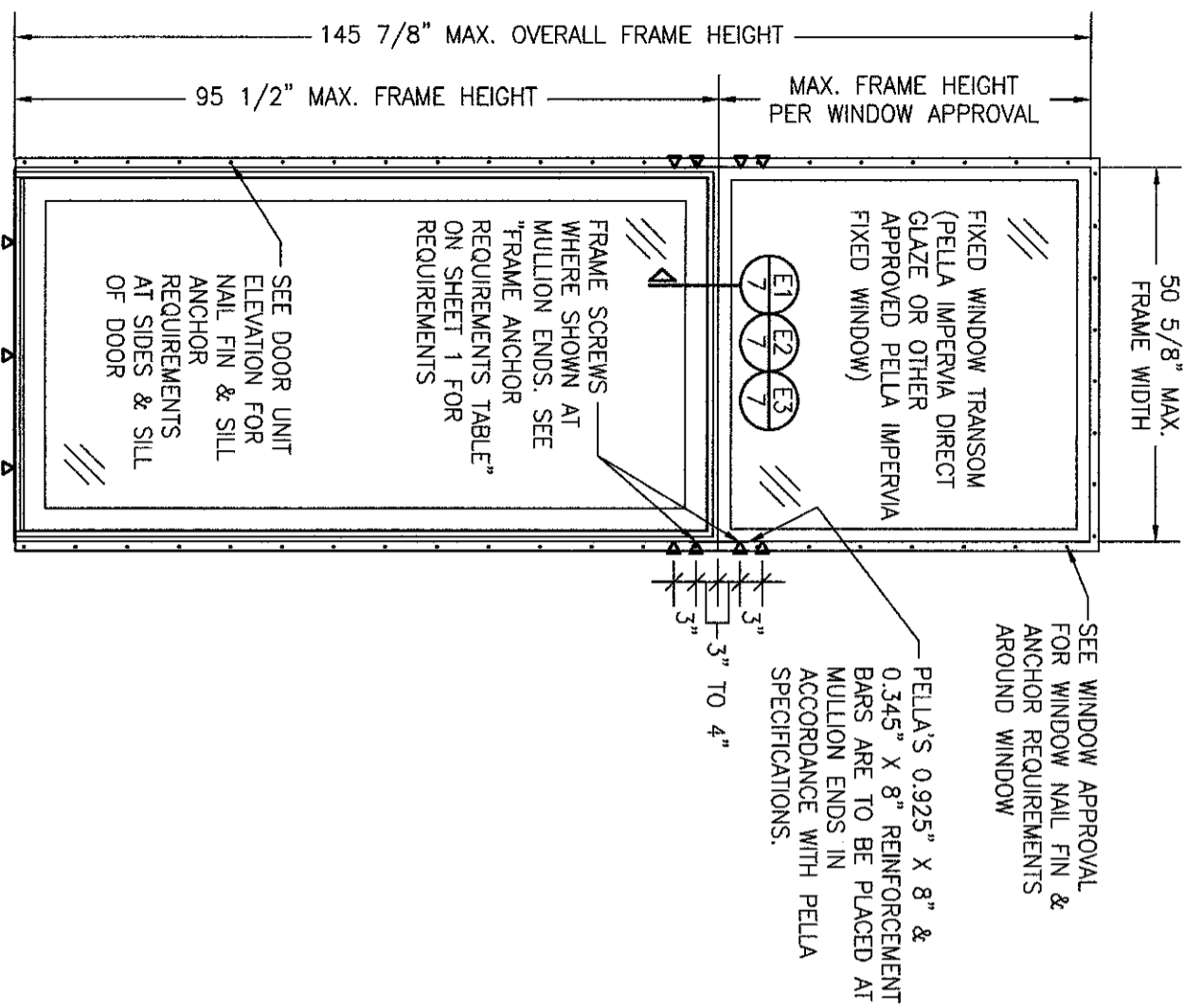


PELLA CORPORATION
102 MAIN STREET
PELLA, IA 50219
641-621-1000

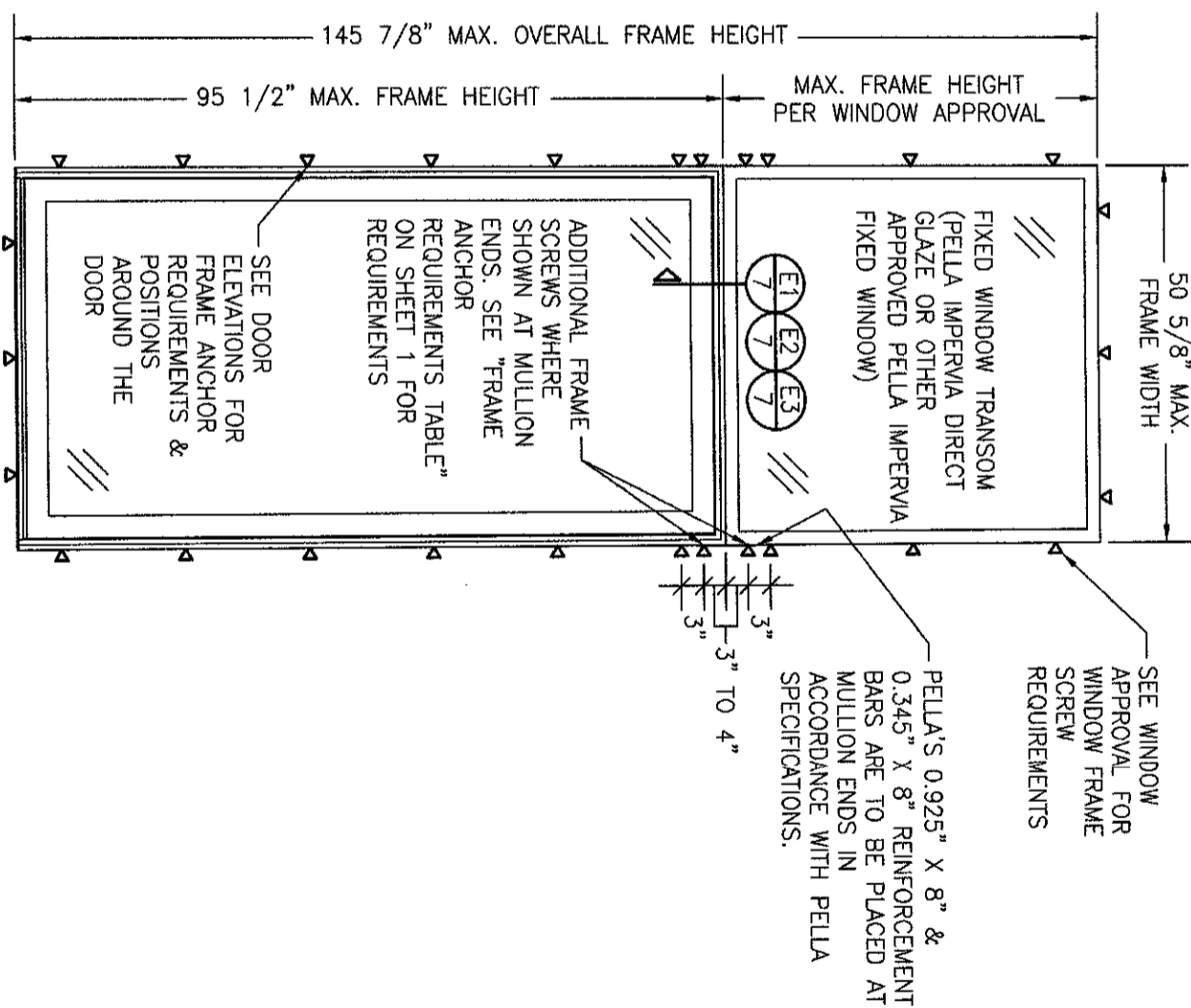
NO.	REVISION DESCRIPTION	BY	DATE

DRAWN BY: W.M.S.
CHECKED BY: W.M.S.
DATE: 07/08/21

DRAWING NO. 2003
SHEET NO. 4 OF 7

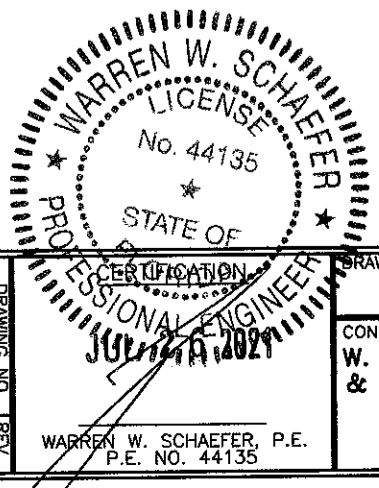


**EXTERIOR ELEVATION:
FIXED PANEL DOOR WITH TRANSOM**
SCALE: 1/2" = 1'-0"
(NAIL FIN MOUNT CONDITION)



**EXTERIOR ELEVATION:
FIXED PANEL DOOR WITH TRANSOM**
SCALE: 1/2" = 1'-0"
(FRAME SCREW MOUNT CONDITION)

ALLOWABLE DESIGN PRESSURE (XO & OX DOORS WITH TRANSOM)
FOR ALLOWABLE PRESSURE ON DOOR, SEE "O" DOOR ELEVATION SHEET 1.
FOR ALLOWABLE PRESSURE ON TRANSOM WINDOW, SEE APPLICABLE WINDOW APPROVAL.
NOTE: ALLOWABLE PRESSURE ON THE ENTIRE UNIT SHALL BE THE LESSER OF THE ALLOWABLE PRESSURES ON THE DOOR AND TRANSOM WINDOW.



DRAWING TITLE
IMPERVIA MODEL 2.0 NON-IMPACT SLIDING PATIO DOORS

CONSULTANTS
W. W. SCHAEFER ENGINEERING & CONSULTING, P.A. (CA 6809)
7480 150TH COURT NORTH
PALM BEACH GARDENS, FL 33418
PHONE: 561-744-3424

JOB INFORMATION:
PELLA CORPORATION
102 MAIN STREET
PELLA, IA 50219
641-621-1000

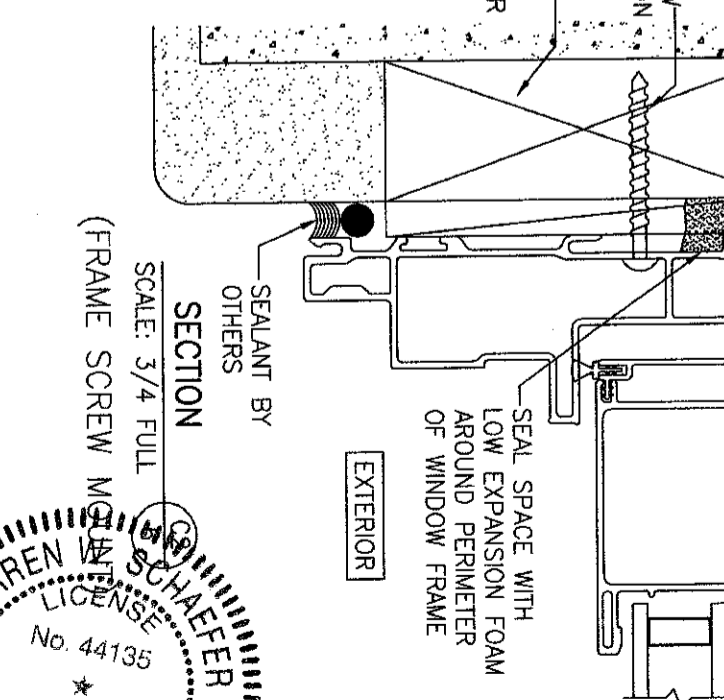
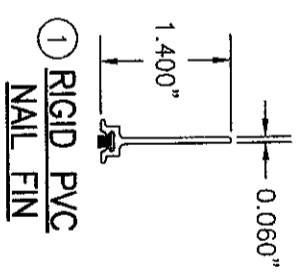
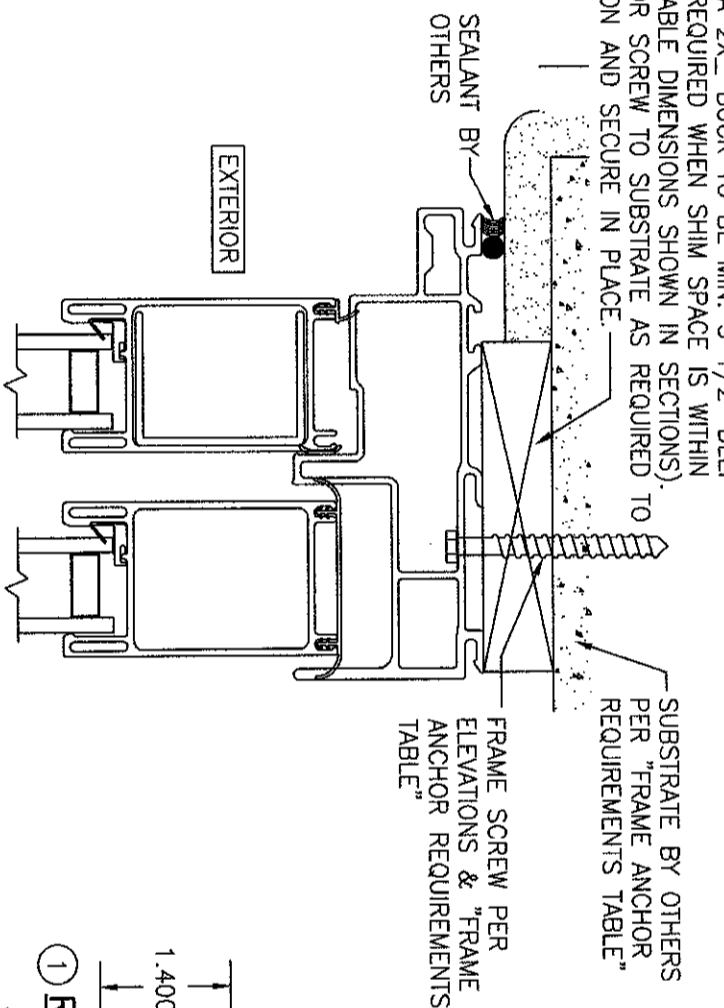
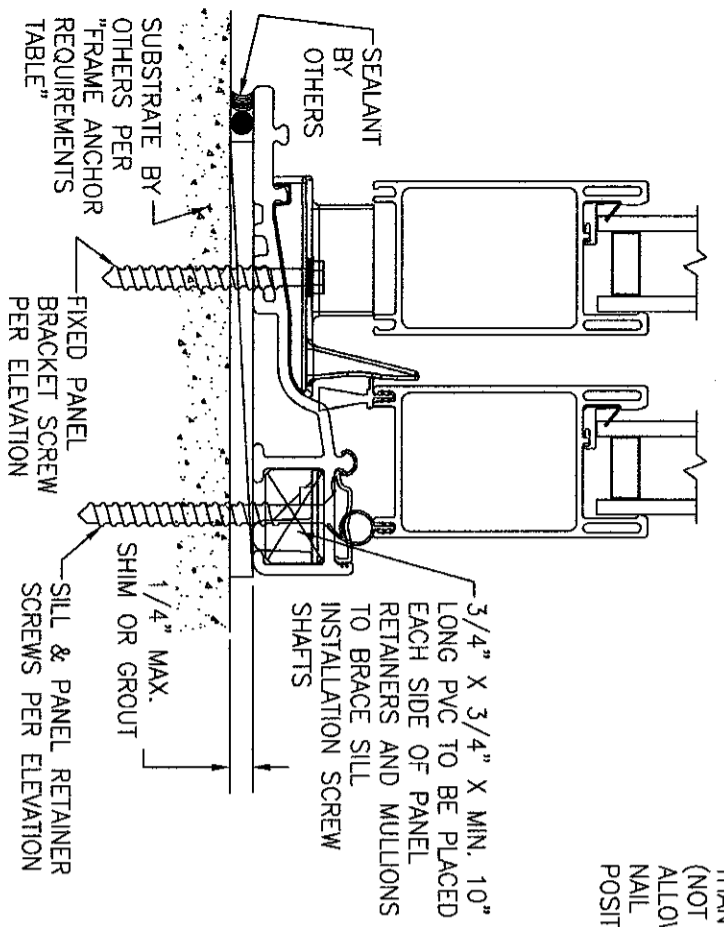
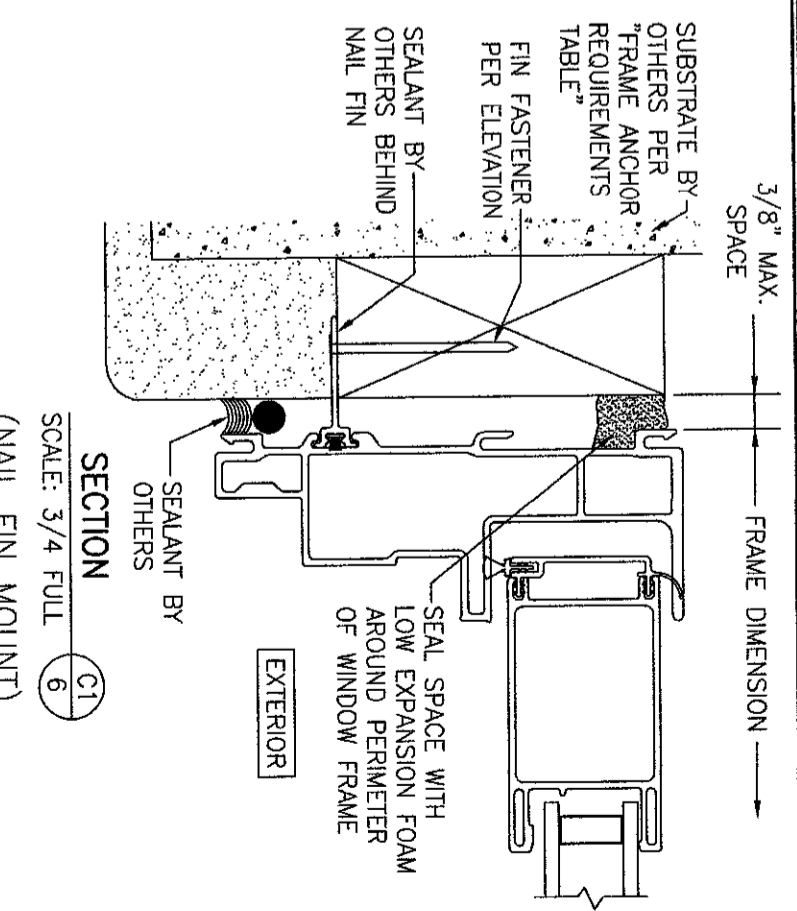
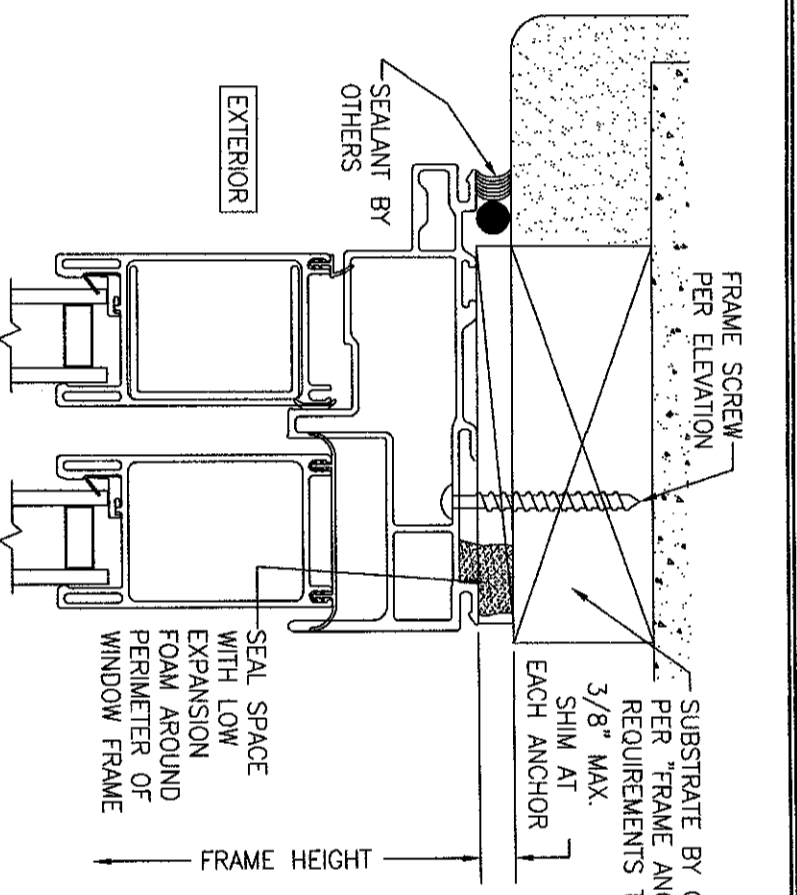
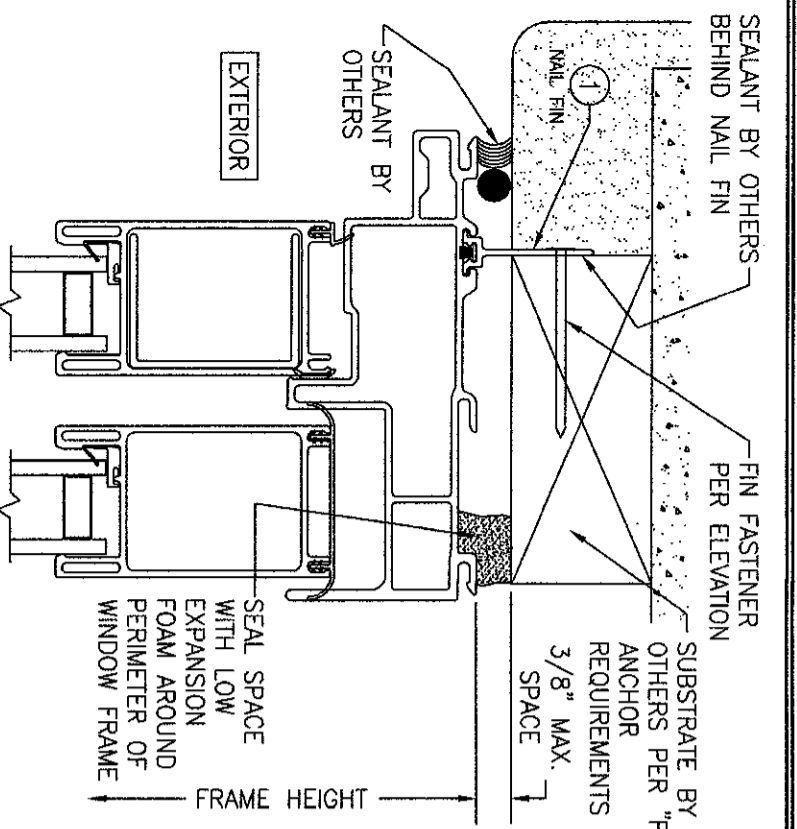
NO.	REVISION DESCRIPTION	BY	DATE

DRAWN BY: W.M.S.
CHECKED BY: W.M.S.
PLOT: 1-24
DATE: 07/08/21

DRAWING NO.
2003

SHEET NO.
5 OF 7

WARREN W. SCHAEFER, P.E.
P.E. NO. 44135



CONTINUOUS WOOD MEMBER LESS IN THICKNESS THAN A 2X BUCK TO BE MIN. 3 1/2\"

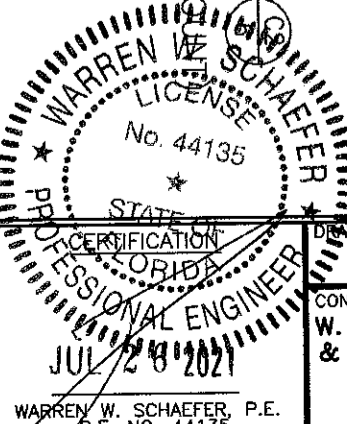
(HEAD SECTION SHOWN; SILL & SIDES ARE INSTALLED THE SAME)
 (DIRECT MOUNT CONDITION IS NOT APPLICABLE AT SILL)
 (FOR DETAIL NOT SHOWN, SEE OTHER SECTIONS)

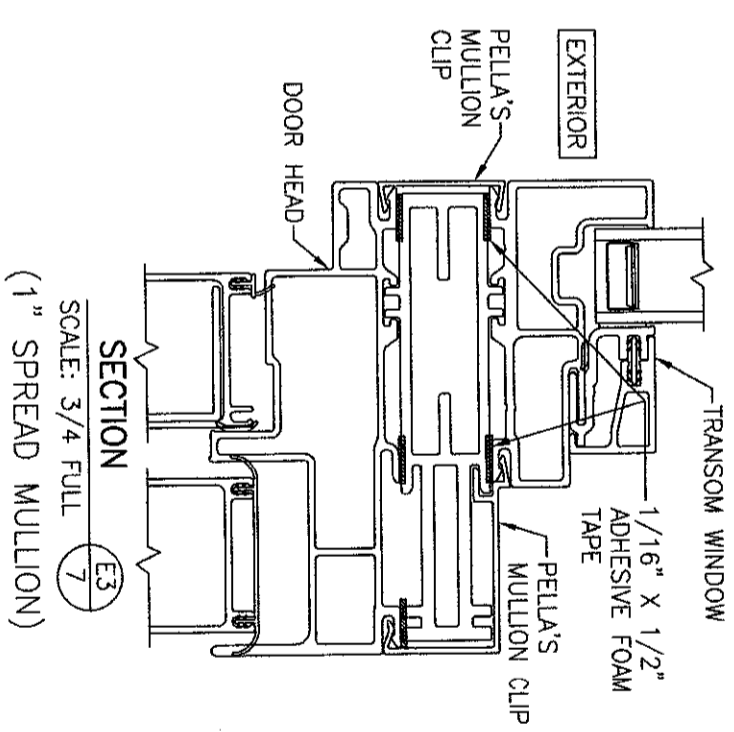
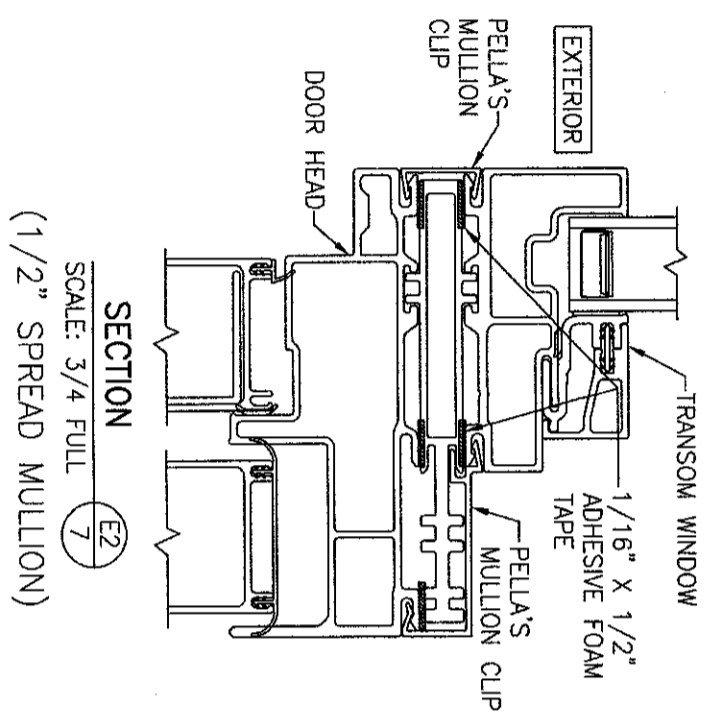
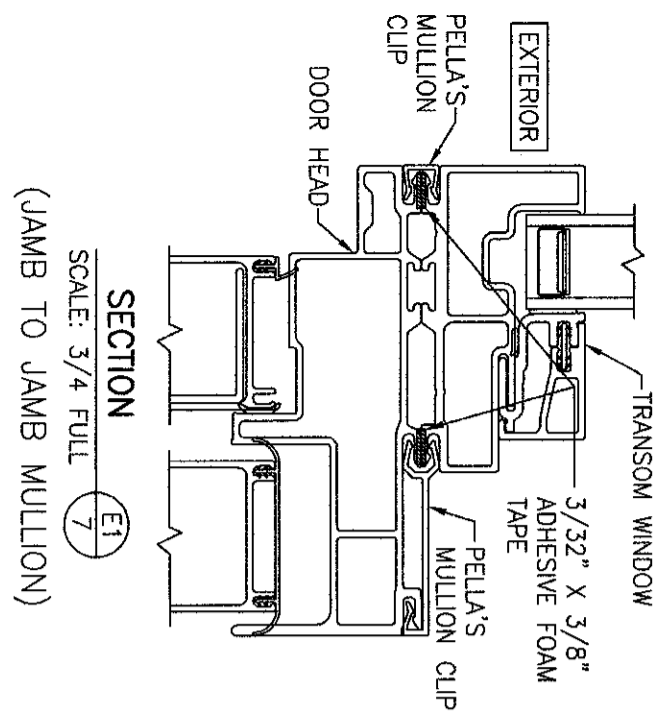
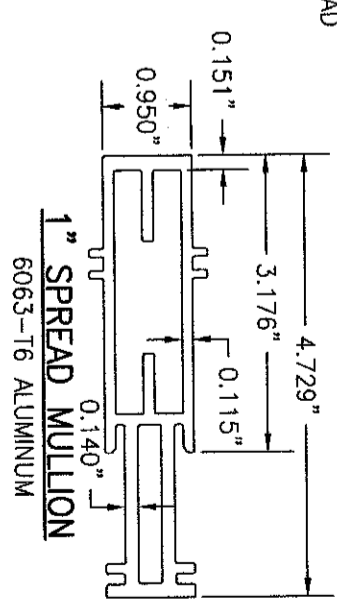
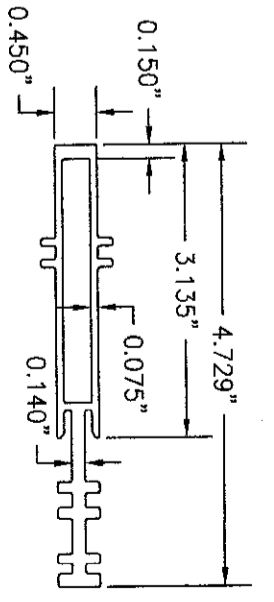
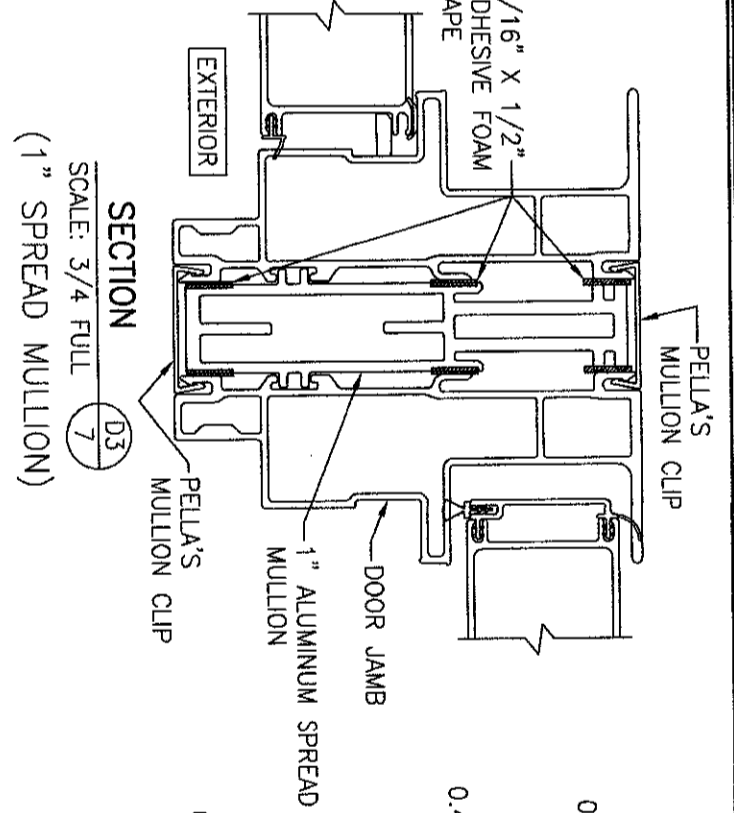
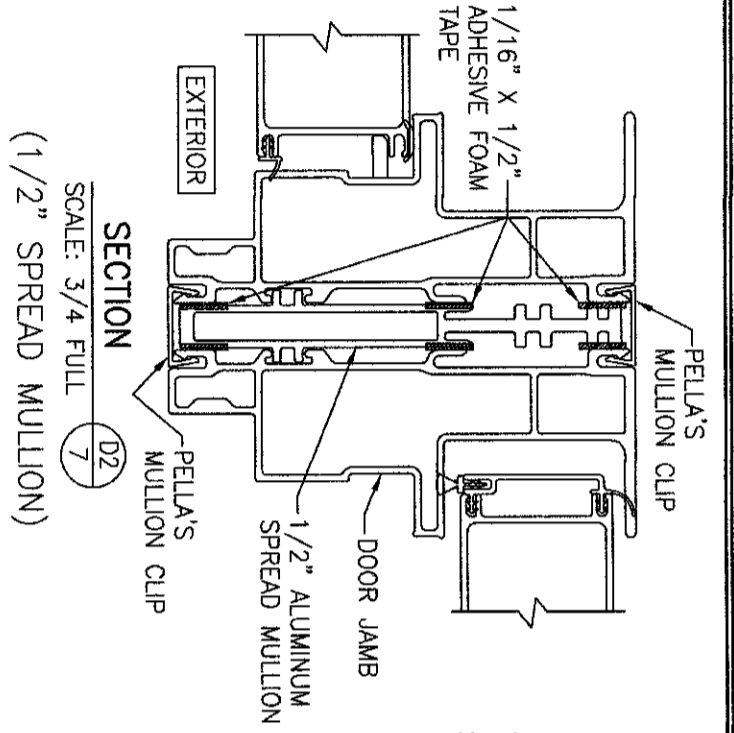
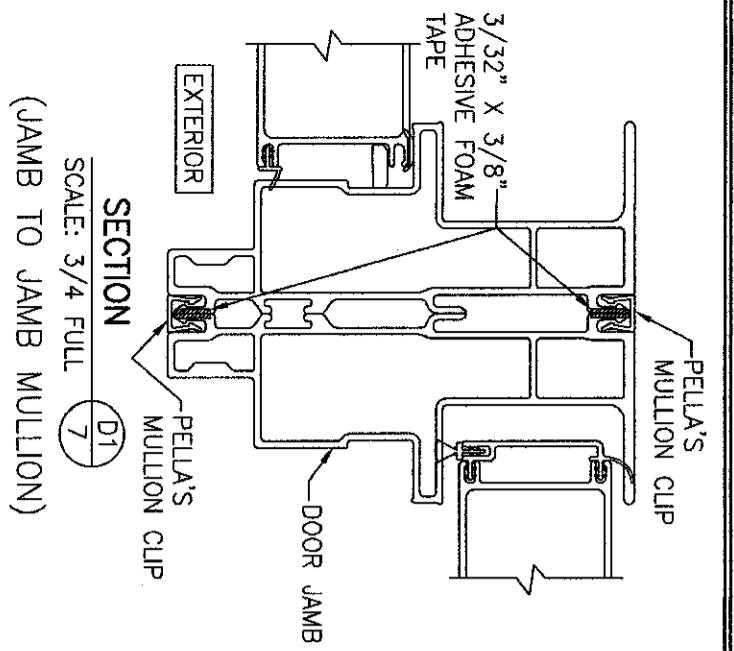
NO.	REVISION DESCRIPTION	BY	DATE

PELLA CORPORATION
 102 MAIN STREET
 PELLA, IA 50219
 641-621-1000



W. W. SCHAEFER ENGINEERING & CONSULTING, P.A. (CA 6809)
 7480 150TH COURT NORTH
 PALM BEACH GARDENS, FL 33418
 PHONE: 561-744-3424





NO.	REVISION	DESCRIPTION	BY	DATE

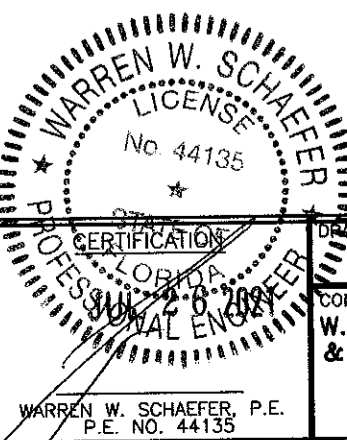
DRAWN BY: W.M.S.
 CHECKED BY: W.M.S.
 DATE: 07/08/21

PELLA CORPORATION
 102 MAIN STREET
 PELLA, IA 50219
 641-621-1000



DRAWING TITLE
IMPERVIA MODEL 2.0 NON-IMPACT SLIDING PATIO DOORS

CONSULTANTS
W. W. SCHAEFER ENGINEERING & CONSULTING, P.A. (CA 6809)
 7480 150TH COURT NORTH
 PALM BEACH GARDENS, FL 33418
 PHONE: 561-744-3424



DRAWING NO. **2003**
 SHEET NO. **7** OF **7**